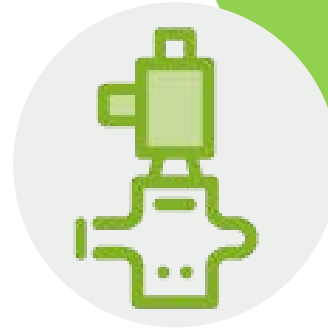


# CGSGSV212

NPT Gas Solenoid  
 Valves Normally Closed  
 Safety Shut Off



120VAC Power  
 Input



UL Listed



Normally Closed  
 Safety Shutoff



2 1/2" to 3" NPT  
 Available For This  
 Model  
 Various Other Sizes  
 Also Available

## Standards



## Product Overview

The CGS range of normally closed, electrically operated gas valves provide safety shut down over combustible gas such as natural (Methane) and LP (Liquefied petroleum).

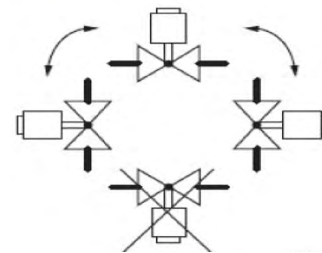
These valves are suitable for CSD-1 applications along with on/off control on water heaters, atmospheric boilers, roof top make up air units, power burners and commercial kitchen ranges.

Add manual re-set by incorporating an CGS controller or panic button.

## Features

- Zero Differential
- 0-2 PSI Max Working Pressure
- 110V AC
- 1/4" Inlet & Outlet Ports
- Body: Die Cast Aluminum
- Max Temp: 145°F
- Min Temp: -40°F

## Mounting Position



Metal shoe  
 construction of  
 the diaphragm  
 allows for vertical  
 installation, with  
 less damage  
 from debris and  
 over pressure.



### WARNING

If the flow is not in the same direction of  
 arrow, valve may not shut off.

## Approvals

UL YLOZ Automatic Shut Off Valves  
 Complies with:  
 AGA  
 CSA/ANSI Z21.21-CGA6.5 FM  
 CSD-1 Acceptable



## Technical Information:

### Maximum Pressure:

Voltage / Frequency	Maximum Pressure (PSI)
110/120 Vac, 50/60 Hz	2.0

### Current Draw

Pipe Size (Inch)	110Vac / 2PSI
2+1/2"	0.575A

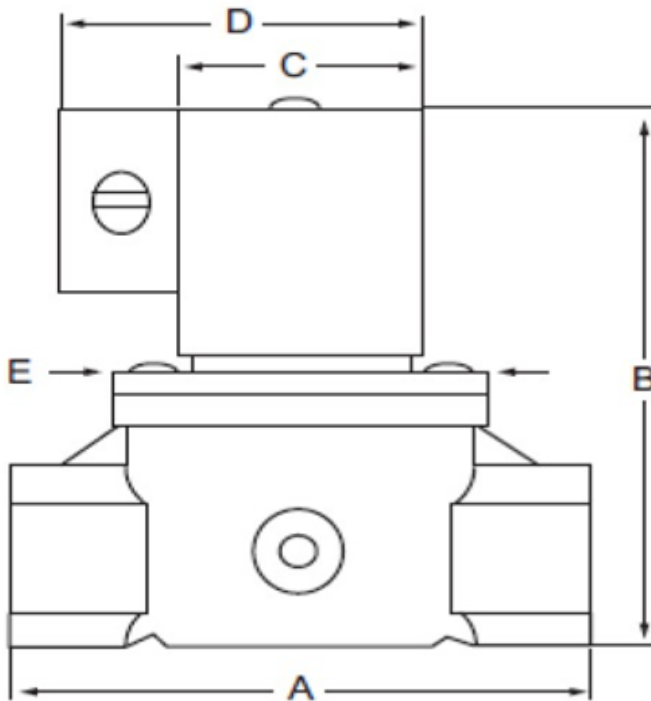
### Capacity

CFH at Pressure Drop of 1-Inch Water Column sp. gr.=0.64

Pipe Size (Inch)	110Vac / 2PSI
2+1/2"	5,070

### Dimensions

Pipe Size (Inch)	A	B	C	D	E
2+1/2"	9-1/2	12-3/4	4-9/16	6-1/8	7-7/8



Find out more

**Canadian Gas Safety Inc**

[www.canadiangassafety.com](http://www.canadiangassafety.com)

Head office: 150 King Street West Suite 200,

Toronto, ON M5H 1J9

Tel: (647) 577-1500

Email: [info@canadiangassafety.com](mailto:info@canadiangassafety.com)

