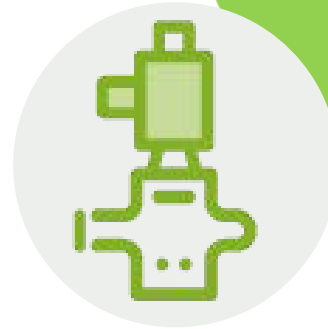


# CGS Merlin 4" NF 30 PSI

## Datasheet

4" Flanged Gas Solenoid Valve  
2-Way, Electrohydraulic Actuator,  
Normally Closed, Safety Shut Off,  
0-30PSI / 120VAC



120VAC Power Input



UL Listed



Normally Closed Safety Shutoff



Various Other Sizes Also Available

### Standards



## Product Overview

The CGS range of normally closed, electrically operated gas valves provide safety shut down over combustible gas such as natural (Methane) and LP (Liquefied petroleum).

These valves are suitable for CSD-1 applications along with on/off control on water heaters, atmospheric boilers, roof top make up air units, power burners and commercial kitchen ranges.

Add manual re-set by incorporating an CGS control or panic button.

## Technical Specification

| Pipe Size  | *Max Operating Pressure Differential | **Max. Rated Pressure |
|------------|--------------------------------------|-----------------------|
| 4" Flanged | 30 PSI                               | 150PSI                |

\*Max Operating Pressure Differential (UL) allowable pressure drop from inlet to output for proper operation.  
\*\*Max. Rated Pressure that the valve can be exposed to without leakage or damage to the valve.

| Cf/h   | Cv Flow Factor |
|--------|----------------|
| 27,000 | 510            |

| Voltage       | Inrush | Opening | Holding | VA  |
|---------------|--------|---------|---------|-----|
| 120VAC / 60Hz | 27     | 2.7     | 0.18    | 324 |

| Nominal Opening Time | Closing Time       |
|----------------------|--------------------|
| 27 Seconds Maximum   | One Second Maximum |

## Approvals

UL YLOZ Automatic Shut Off Valves  
Complies with:  
AGA  
CSA/ANSI Z21.21-CGA6.5 FM  
CSD-1 Acceptable

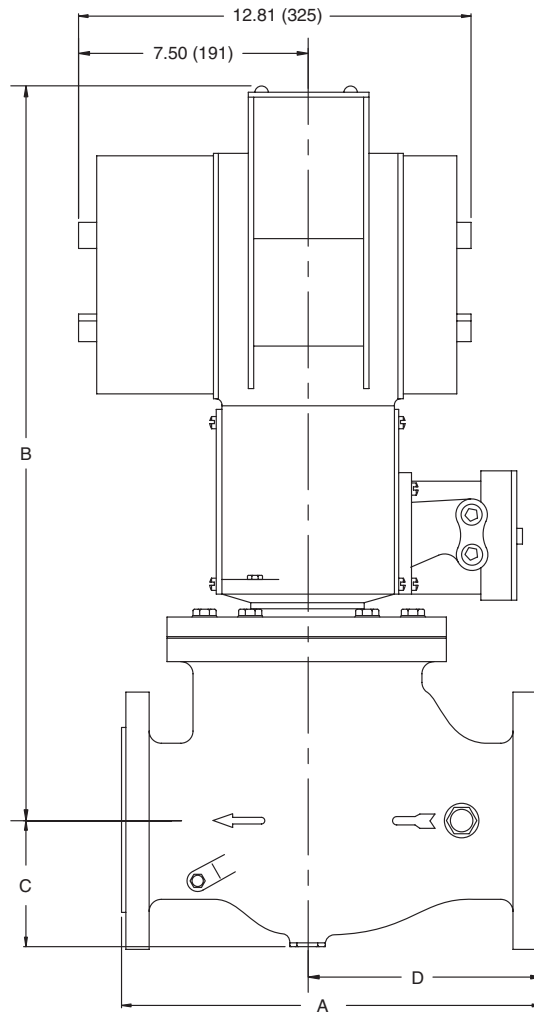
## Optional Extras

- Closed Position Indicator
- Type 4 Watertight Enclosure Available For Outdoor or Indoor Wash Down Installations (Type 1 General Purpose Enclosure Standard)
- Visual Power Indicator



## Dimensions:

|          |               |
|----------|---------------|
| <b>A</b> | 13.87<br>Inch |
| <b>B</b> | 28.69<br>Inch |
| <b>C</b> | 4.06<br>Inch  |
| <b>D</b> | 7.75<br>Inch  |



## Features:

Ambient temperature rating is -40°F to +150°F (-40°C to +66°C) Valve and actuator combinations can be mounted in any position.

Factory installed single pole double throw (SPDT) field adjustable Auxiliary Switch.

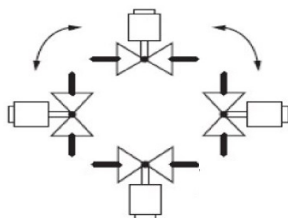
Standard enclosure meets NEMA1 (IP30) requirements; models available with NEMA4 (IP54) weatherproof enclosure.

Valve seal overtravel interlock (double seal) to meet specific code, standard and insurer requirements.

Red OPEN indicator attached to actuator stem with Yellow SHUT indicator shows fully CLOSED.

Aux. Switch and Proof-of-Closure Switch Ratings. (1/4 hp @ 120V).

## Mounting Position



Multi-Pose, may be mounted in any position.

### WARNING

If the flow is not in the same direction of arrow, valve may not shut off.



Find out more  
**Canadian Gas Safety Inc**  
[www.canadiangassafety.com](http://www.canadiangassafety.com)

Head office: 150 King Street West Suite 200,  
 Toronto, ON M5H 1J9  
 Tel: (647) 577-1500  
 Email: [info@canadiangassafety.com](mailto:info@canadiangassafety.com)

