

# CGSMerlin6INF

## Datasheet

6" Flanged Gas Solenoid Valve  
2-Way, Internally Piloted, Normally  
Closed, 0-20PSI / 120VAC



120VAC Power  
Input



UL Listed



Normally  
Closed Safety  
Shutoff With  
Assisted Lift



0-20PSI"  
Pressure Rating

Other Pressures  
Also Available

### Standards



### Product Overview

The CGS range of normally closed, electrically operated gas valves provide safety shut down over combustible gas such as natural (Methane) and LP (Liquefied petroleum).

These valves are suitable for CSD-1 applications along with on/off control on water heaters, atmospheric boilers, roof top make up air units, power burners and commercial kitchen ranges.

Add manual re-set by incorporating an CGS controller or panic button.

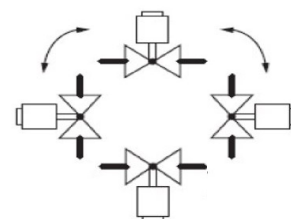
### Technical Specification

Pipe Size (Inch)	Cv Flow Factor	Gas Capacity	Operating Pressure	Max. Fluid Temp
6" (Flanged)	1020	50,000 Cu.Ft/hr	0-20PSI	150 °F

Opening Time	Closing Time	Enclosure	Ambient Temperature	Pipe Taps
27 seconds max.	1 second max.	Type 4	-40°F to 150°F	1/4"

Power Requirement	Standard Voltage
324 VA	120VAC / 60Hz

### Mounting Position



**Multi-Pose**, may be mounted in any position.

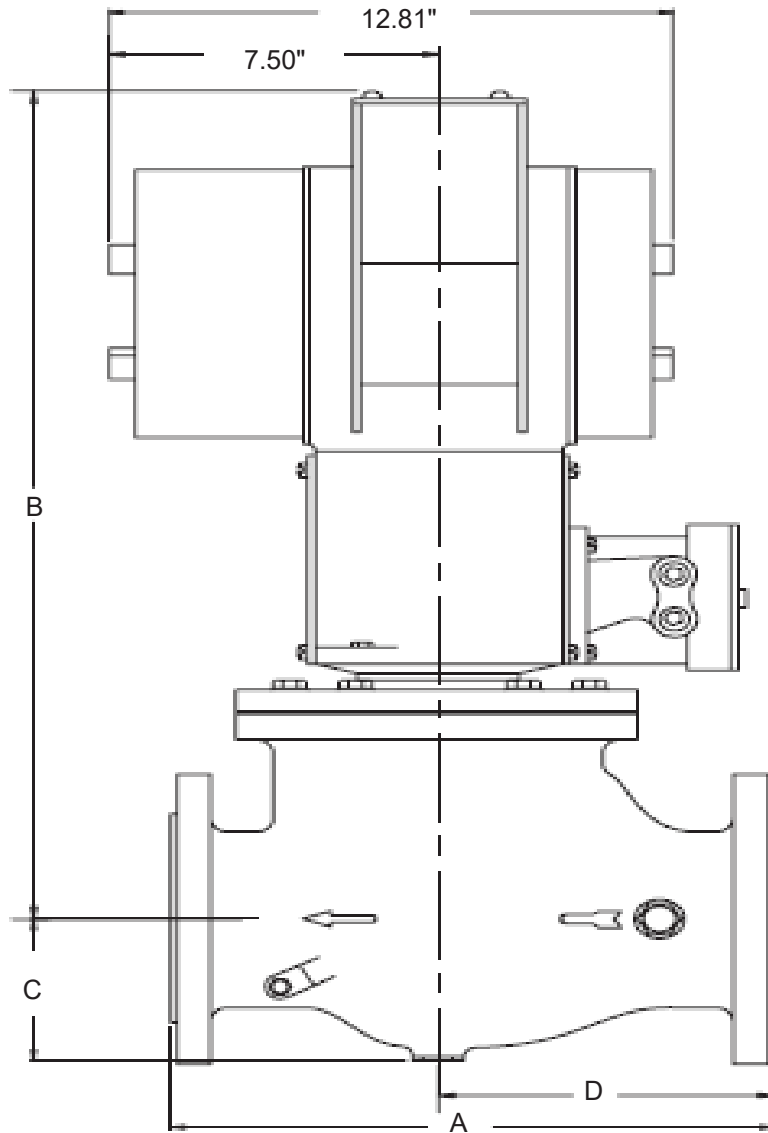


#### WARNING

If the flow is not in the same direction of arrow, valve may not shut off.

## Dimensions:

A	B	C	D
17.81"	29.75"	5.13"	10.35"



Find out more

**Canadian Gas Safety Inc**

[www.canadiangassafety.com](http://www.canadiangassafety.com)

Head office: 150 King Street West Suite 200,

Toronto, ON M5H 1J9

Tel: (647) 577-1500

Email: [info@canadiangassafety.com](mailto:info@canadiangassafety.com)

