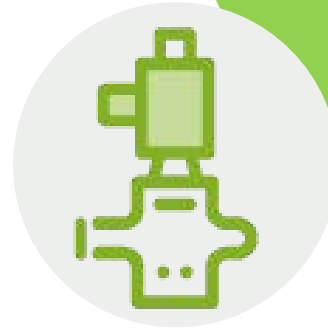


CGSGSV3

NPT Gas Solenoid
Valves Normally Closed
Safety Shut Off



120VAC Power
Input



UL Listed



Normally Closed
Safety Shutoff



2 1/2" to 3" NPT
Available For This
Model
Various Other Sizes
Also Available

Standards



Product Overview

The CGS range of normally closed, electrically operated gas valves provide safety shut down over combustible gas such as natural (Methane) and LP (Liquefied petroleum).

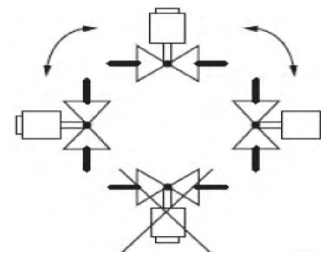
These valves are suitable for CSD-1 applications along with on/off control on water heaters, atmospheric boilers, roof top make up air units, power burners and commercial kitchen ranges.

Add manual re-set by incorporating an CGS controller or panic button.

Features

- Zero Differential
- 0-2 PSI Max Working Pressure
- 110V AC
- 1/4" Inlet & Outlet Ports
- Body: Die Cast Aluminum
- Max Temp: 145°F
- Min Temp: -40°F

Mounting Position



Metal shoe construction of the diaphragm allows for vertical installation, with less damage from debris and over pressure.



WARNING

If the flow is not in the same direction of arrow, valve may not shut off.

Approvals

UL YLOZ Automatic Shut Off Valves
Complies with:
AGA
CSA/ANSI Z21.21-CGA6.5 FM
CSD-1 Acceptable



Technical Information:

Maximum Pressure:

Voltage / Frequency	Maximum Pressure (PSI)
110/120 Vac, 50/60 Hz	2.0

Current Draw

Pipe Size (Inch)	110Vac / 2PSI
3"	0.575A

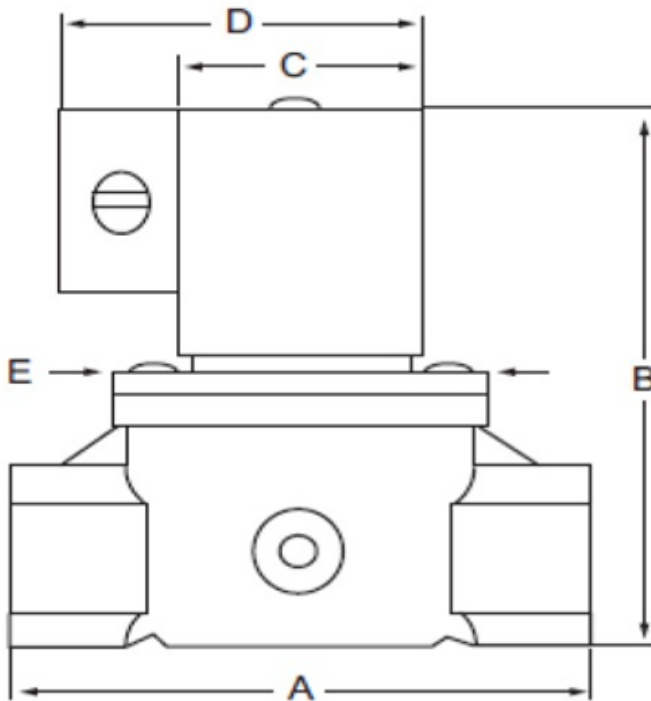
Capacity

CFH at Pressure Drop of 1-Inch Water Column sp. gr.=0.64

Pipe Size (Inch)	110Vac / 2PSI
3"	6,100

Dimensions

Pipe Size (Inch)	A	B	C	D	E
3"	9-1/2	12-3/4	4-9/16	6-1/8	7-7/8



Find out more

Canadian Gas Safety Inc

www.canadiangassafety.com

Head office: 150 King Street West Suite 200,

Toronto, ON M5H 1J9

Tel: (647) 577-1500

Email: info@canadiangassafety.com

