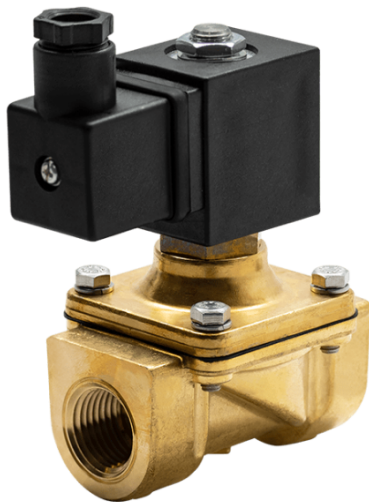


SOLVLV-Y Datasheet

2-Way, Internally Piloted
Normally Closed, 120Vac,
1/2" - 1 1/2" NPT



120Vac Power
Input



UL Listed



Normally Closed
Safety Shutoff



1/2" to 1 1/2" NPT
Available For This
Model
Various Other Sizes
Also Available

Standards



Product Overview

CGS SOLVLV-Y solenoid valves are normally closed (N/C) and constructed with a durable brass body, two-way inlet and outlet ports. This series of solenoid valves have been designed to control air, inert gas & water. Examples include: Compressed Air, Oxygen, Vacuum, Propane & Methane.

Sizes Available

Valve Size " (inch) NPT	CGS Part Number
1/2"	SOLVLV-Y-12
3/4"	SOLVLV-Y-34
1"	SOLVLV-Y-1
1+1/4"	SOLVLV-Y-114
1+1/2"	SOLVLV-Y-112

Materials of Construction

Body / Orifice	Brass
Core Tube	Stainless Steel 300
Fixed Core	Stainless Steel 400
Plunger	Stainless Steel 400
Spring	Stainless Steel 300
Shading Ring	Copper

Electrical Specifications

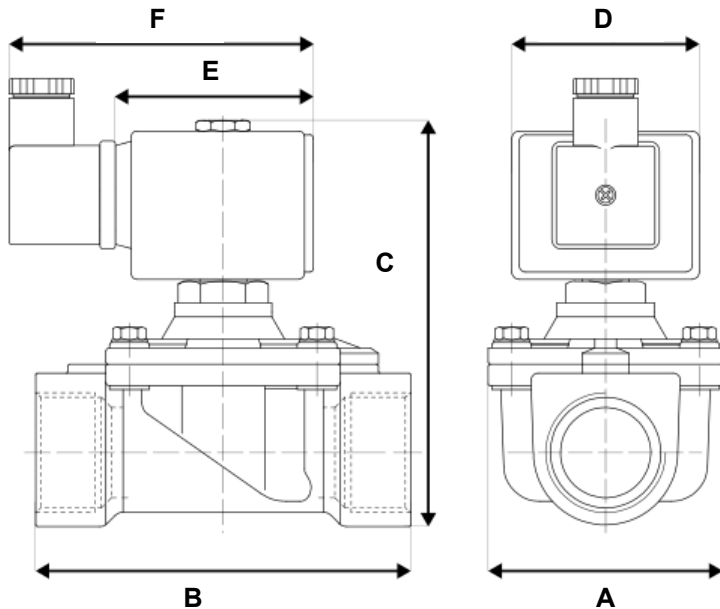
	SOLVLV-Y-12	SOLVLV-Y-34	SOLVLV-Y-1	SOLVLV-Y-114	SOLVLV-Y-112
Power:	120V ac	120V ac	120V ac	120V ac	120V ac
Holding:	15 VA	15 VA	23 VA	15 VA	15 VA
Inrush:	25 VA	25 VA	35 VA	25 VA	25 VA
Voltage Tolerance:	+10% - 15%	+10% - 15%	+10% - 15%	+10% - 15%	+10% - 15%
Coil Inner Diameter:	1/2"	1/2"	1/2"	1/2"	1/2"
Coil Molding:	Polyethylene (PET)	Polyethylene (PET)	Polyethylene (PET)	Polyethylene (PET)	Polyethylene (PET)
Coil Rating:	-5-355°F (Class H)	-5-355°F (Class H)	-5-355°F (Class H)	-5-355°F (Class H)	-5-355°F (Class H)
Duty Cycle:	Continuous, 100 ED	Continuous, 100 ED	Continuous, 100 ED	Continuous, 100 ED	Continuous, 100 ED
Enclosures:	NEMA 4, IP65	NEMA 4, IP65	NEMA 4, IP65	NEMA 4, IP65	NEMA 4, IP65

Technical Specifications

	SOLVLV-Y-12	SOLVLV-Y-34	SOLVLV-Y-1	SOLVLV-Y-114	SOLVLV-Y-112
Pipe Size (Inch)	1/2"	3/4"	1"	1 1/4"	1 1/2"
Orifice Size (Inch)	5/8"	5/8"	1"	1 3/8"	1 5/16"
Flow Factor (CV)	2.80	2.80	8.40	19.00	19.00
Voltage (AC)	120VAC	120VAC	120VAC	120VAC	120VAC
Wattage (W)	8 Watts	8 Watts	8 Watts	8 Watts	8 Watts
Pressure (PSI)	0-200 psi	0-200 psi	0-200 psi	0-230 psi	3-150 psi
Sealing Material	NBR+PA	NBR+PA	NBR+PA	NBR	EPDM
Temperature Range	15-195°F	15-195°F	15-195°F	15-195°F	15-280°F
Connector Supplied	Cable Grip DIN	Cable Grip DIN	Cable Grip DIN	Cable Grip DIN	Cable Grip DIN
Medium Examples	Air/Inert Gas/Water	Air/Inert Gas/Water	Air/Inert Gas/Water	Air/Inert Gas/Water	Water/Steam

Valve Dimensions

	SOLVLV-Y-12	SOLVLV-Y-34	SOLVLV-Y-1	SOLVLV-Y-114	SOLVLV-Y-112
Valve Width (A):	2"	2"	2 1/2"	3 3/4"	3 7/8"
Valve Length (B):	2 3/4"	2 3/4"	4 1/8"	5"	5 5/8"
Valve Height (C):	3 7/8"	3 7/8"	4 3/8"	5 1/8"	5 1/8"
Coil Width (D):	1 1/8"	1 1/8"	1 1/8"	1 1/8"	1 1/8"
Coil Length (E):	1 5/8"	1 5/8"	1 7/8"	1 5/8"	1 5/8"
Coil Height (F):	2 3/4"	2 3/4"	3"	2 3/4"	2 3/4"



Note: The valve pictured above is with a simple coil, which may or may not reflect the exact specifications of the this particular build.

Find out more
Canadian Gas Safety Inc
www.canadiangassafety.com

Head office: 150 King Street West Suite 200,
Toronto, ON M5H 1J9
Tel: (647) 577-1500
Email: info@canadiangassafety.com

